

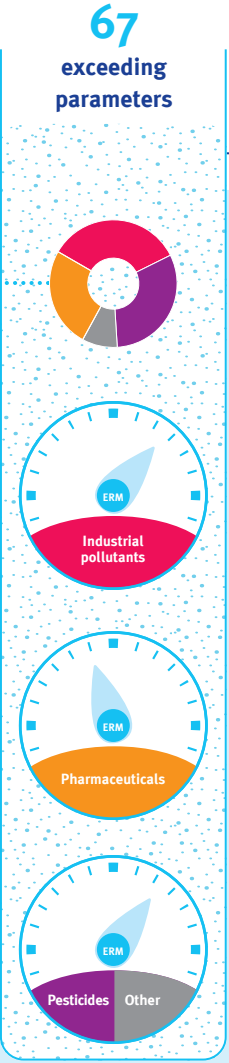
# Monitoring the water quality of the Meuse



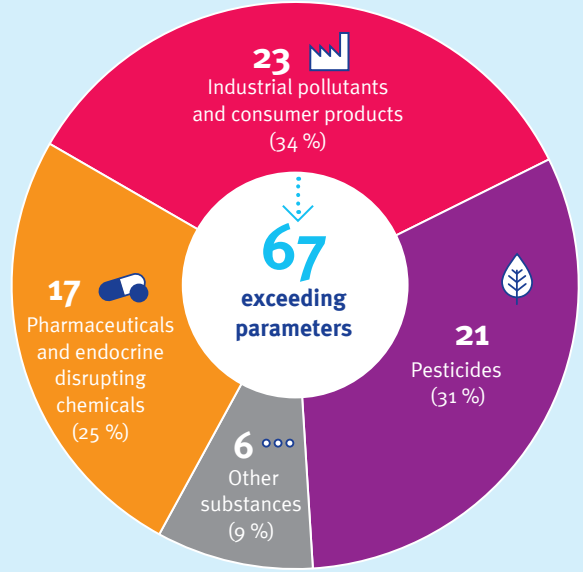
**104.470**  
measurements

**73.392**  
verifiable  
measurements

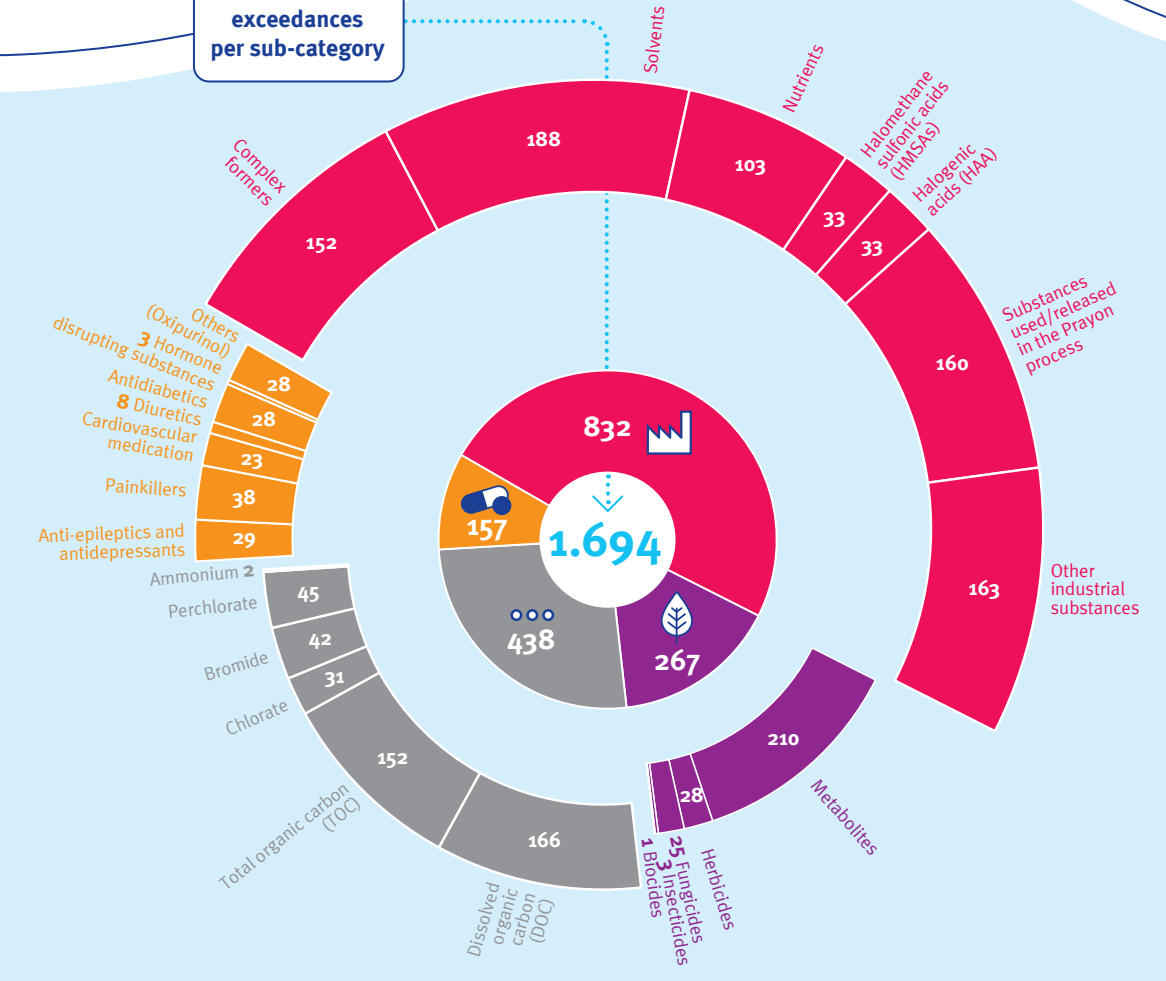
**648**  
parameters



Proper monitoring and data management are crucial to safeguard the water quality of the Meuse as a source of drinking water.



**1.694**  
exceedances  
per sub-category



RIWA-Meuse assesses the water quality of the Meuse according to the target values of the European River Memorandum. Surface water that meets the ERM Target Values can be used to sustainably produce drinking water, making use of natural purification technologies.